

SUPPLEMENTAL INFORMATION

COPING AND STOOLS / THIN STONE STOOLS AND CUBIC SILLS

SECTION 1. INTRODUCTION

1.01 Installation Methods. There are several methods by which stone window stools can be installed. Consideration should be given to the various features of each method in making a selection for a specific installation. See information about installation methods in this section's Data Sheet, Part 3, and illustrations of examples at the close of this section.

SECTION 2. DESIGN CRITERIA

- 2.01 Oil-based putty or sealants** should never be used in contact with stone.
- 2.02 Corrosion-resistant Metals.** All metals that contact the stone must be corrosive-resistant.
- 2.03 Bonding.** There must be 100% coverage of bonding material between stone window stools and substrate.
- 2.04 White portland cement** is recommended for light-colored granite and marble. White portland cement with a low alkali content is recommended for limestone.

For additional information, refer to Chapter 13, Installation General Information.

2.05 Geographic Methods. Some installation methods and materials are not recognized and may not be suitable in some geographic areas because of local trade practices, building codes, climatic conditions, or construction methods. Therefore, while every effort has been made to produce accurate guidelines, they should be used only with the independent approval of technically qualified persons.

SECTION 3. DATA SHEET - THIN STONE STOOLS AND CUBIC SILLS

3.01 PRODUCT DESCRIPTION

1. **Basic Use.** Interior window stools and exterior cubic sills.
2. **Fabrication.** Stone window stools and cubic sills are precut and prefinished to dimensions specified on shop drawings, and are delivered to the job site ready to install.
3. **Finishes.** Exposed surface and edges of thin stone stools shall be polished or honed. Cubic sills shall be abrasive, honed, or rough finish.
4. **Colors.** Most of the commercially available varieties are suitable.
5. **Sizes.** Thin stone stools shall have thicknesses of 3/4" and 1-1/4", or as specified. Cubic sills shall be as specified.

SECTION 4. TECHNICAL DATA

4.01 Each stone variety used for thin stone stools and cubic sills should conform to the applicable ASTM standard specification and the physical requirements contained therein. The specification for each stone type follows:

1. **Granite:** ASTM C615 Standard Specification for Granite Dimension Stone

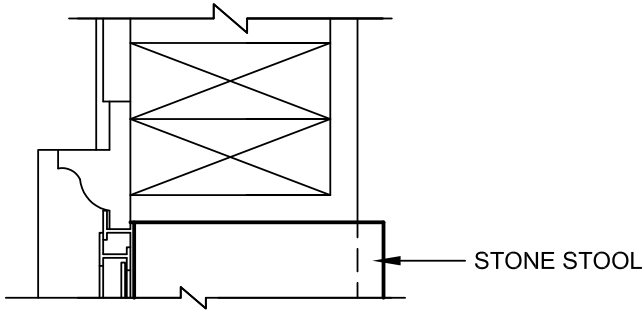
SECTION 5. INSTALLATION

5.01 Methods: Stone window stools are installed either by the standard or thin set method. Cubic sills are installed in a full portland cement mortar bed with dowels.

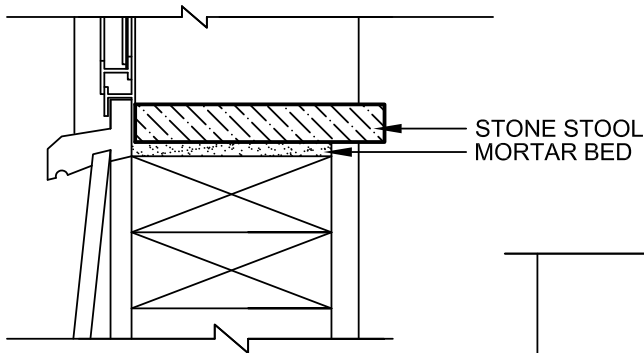
5.02 General Precautions: During construction, the General Contractor shall protect all stone from staining and damage.

1. Oil-based putty and sealants should never be used in contact with the stone.

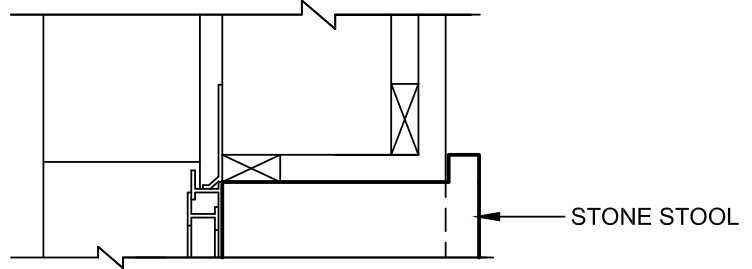
SUPPLEMENTAL INFORMATION COPING AND STOOLS / THIN STONE STOOLS AND CUBIC SILLS



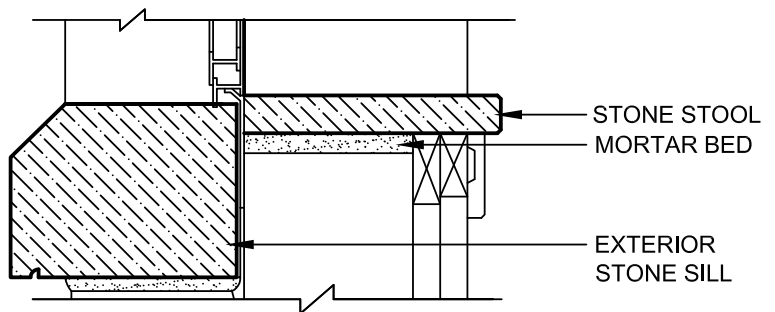
1 PLAN SECTION
(WOOD FRAME CONSTRUCTION)



2 SECTION
(WOOD FRAME CONSTRUCTION)



3 PLAN SECTION
(MASONRY CONSTRUCTION)



4 SECTION
(MASONRY CONSTRUCTION)

NOTE: USE 100% COVERAGE OF MORTAR BED MATERIAL BETWEEN STOOL AND SUBSTRATE.



MARBLE INSTITUTE of AMERICA
28901 Clemens Road - Suite 100
Cleveland, OH 44145
Tel: (440) 250-9222
Fax: (440) 250-9223
www.marble-institute.com

REV	DATE
0	Aug 2006
1	Oct 2006

THIN STONE STOOLS AND CUBIC SILLS SILLS-WINDOW STOOL DETAILS

MIA DIMENSION STONE DESIGN MANUAL VII

DRWG NO: 18-D-2

SCALE:
3" = 1'-0"